



SHASPA – intelligent shared spaces

ICO along the Property Life Cycle



Project Focus



- ◆ Investment Management
- ◆ Development
- ◆ General Contracting
- ◆ Construction

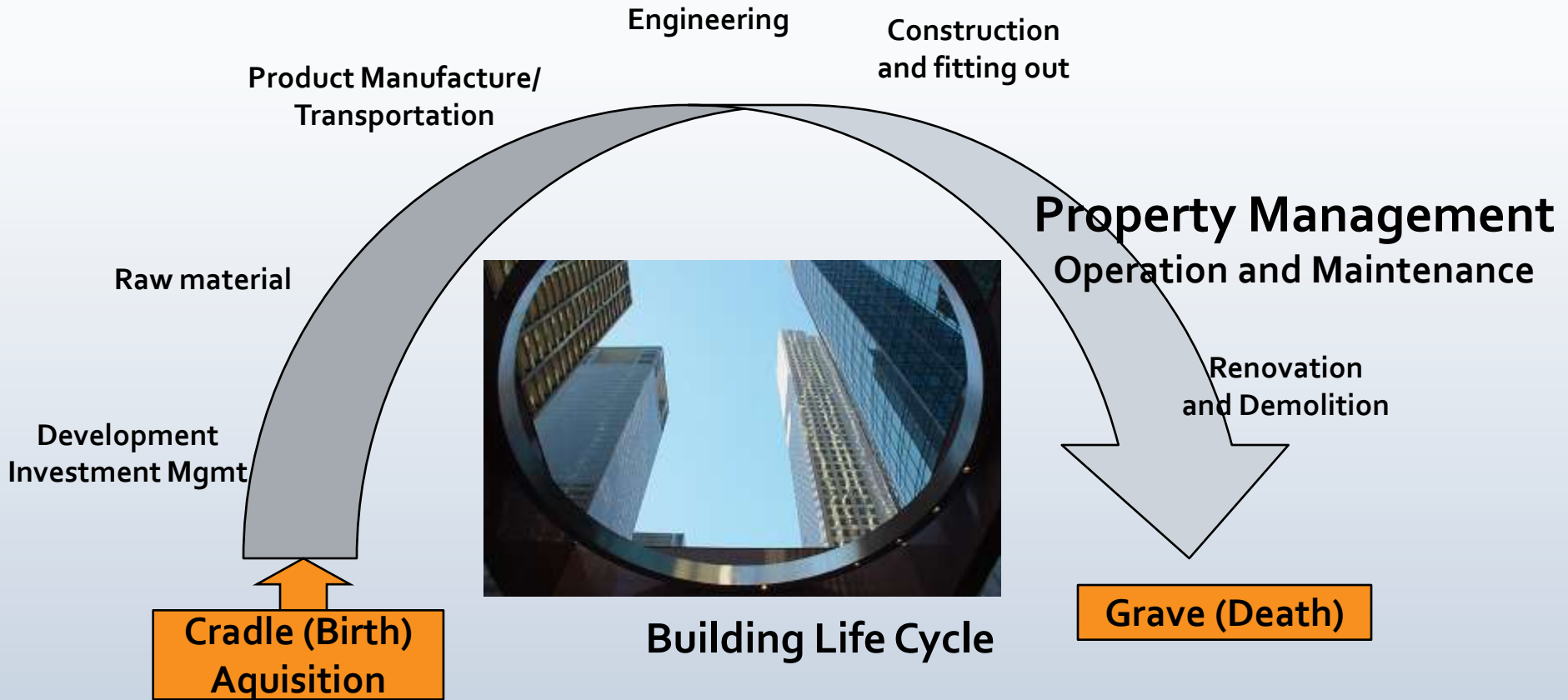
25%

- ◆ Property Management

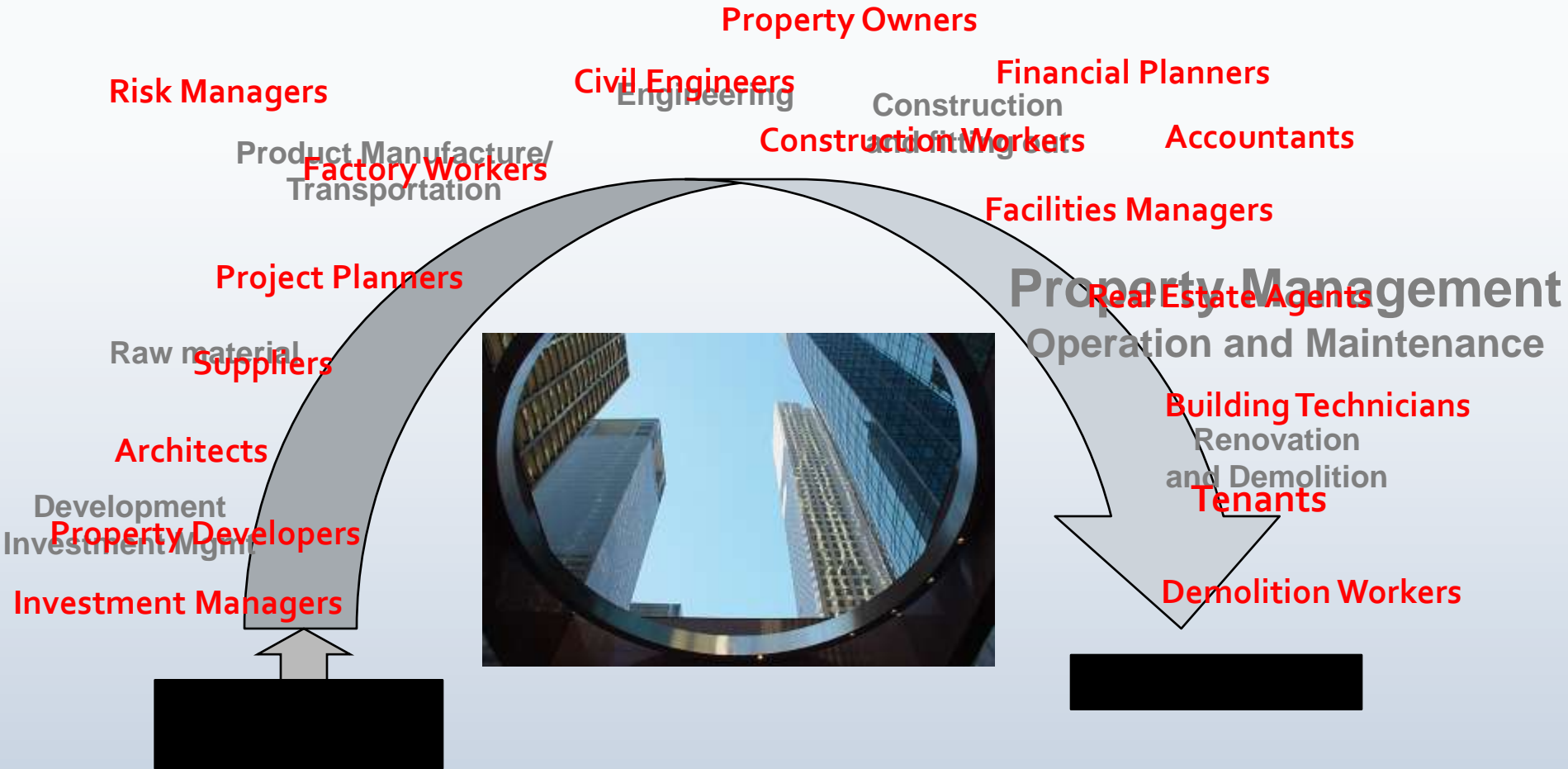
75%

The Property Lifecycle

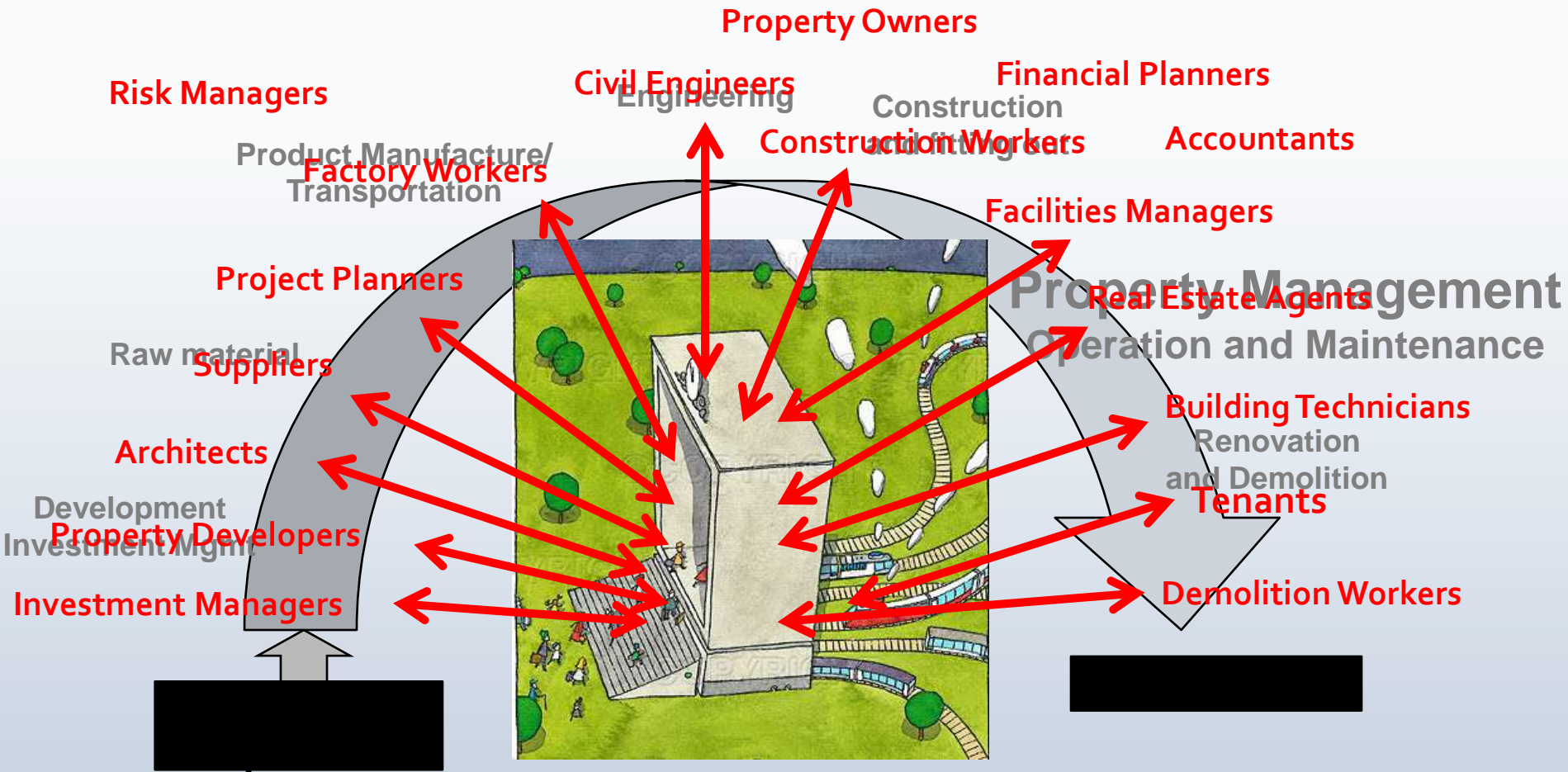
Buildings cause 35-40% of our total CO² emissions



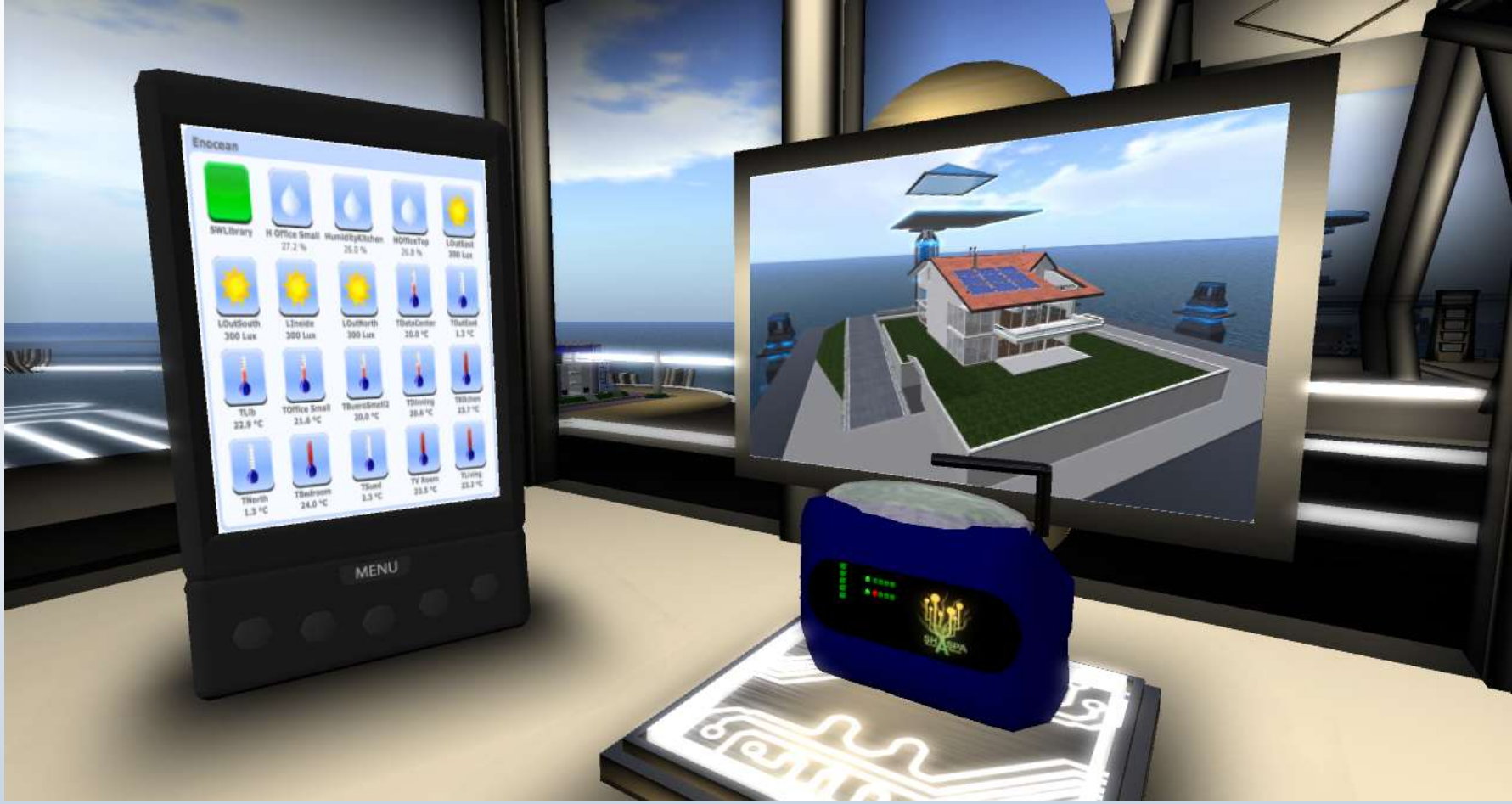
Actors in the Property Lifecycle



Actors in the Property Lifecycle



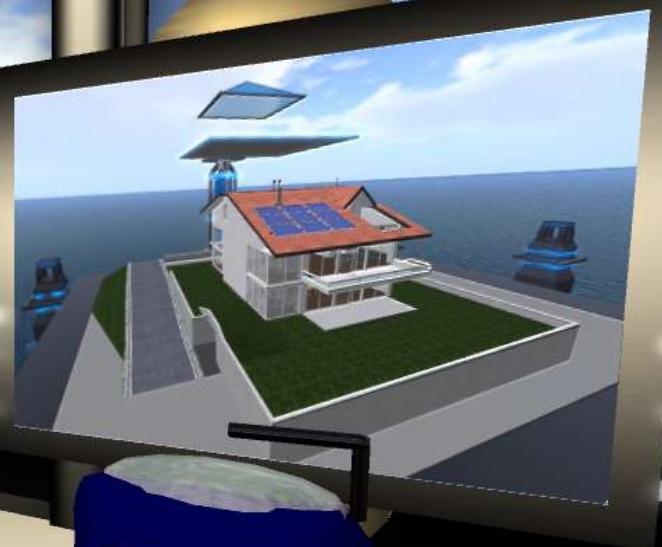
Smart Buildings / Smart Cities



EnOcean

SWLibrary	H Office Small	HumidityKitchen	HOfficeTop	LOutlet
	27.2 %	25.0 %	25.0 %	300 Lux
LOutletSouth	LInevite	LOutletNorth	TDataCenter	TOutlet
300 Lux	300 Lux	300 Lux	20.0 °C	1.3 °C
TLb	TOffice Small	Twardmet2	TShower	TKitchen
22.0 °C	21.0 °C	20.0 °C	20.0 °C	22.7 °C
TNorth	TBedroom	Tswd	TV Room	TLiving
1.3 °C	24.0 °C	2.3 °C	25.0 °C	22.3 °C

MENU



Date Selector

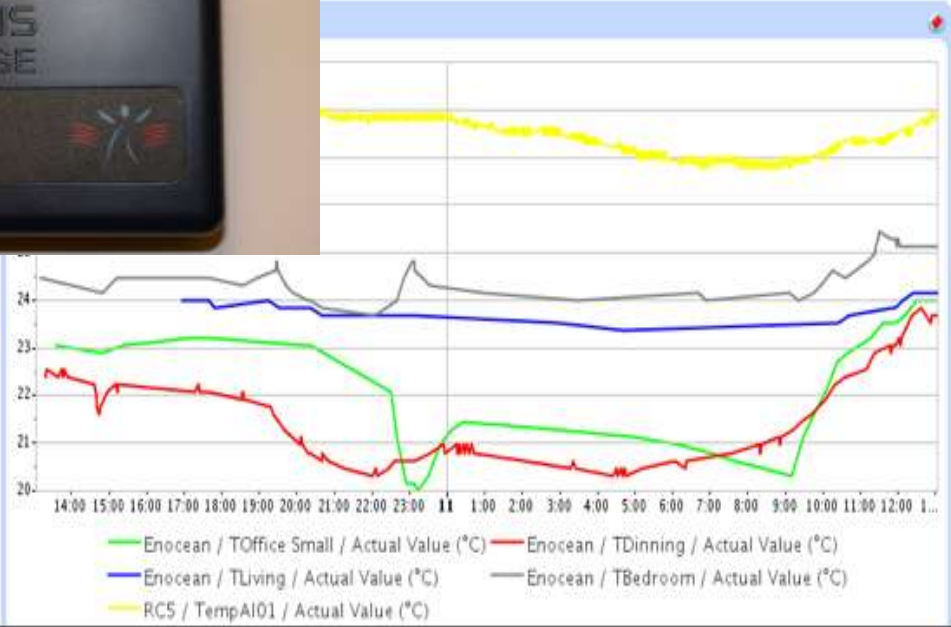
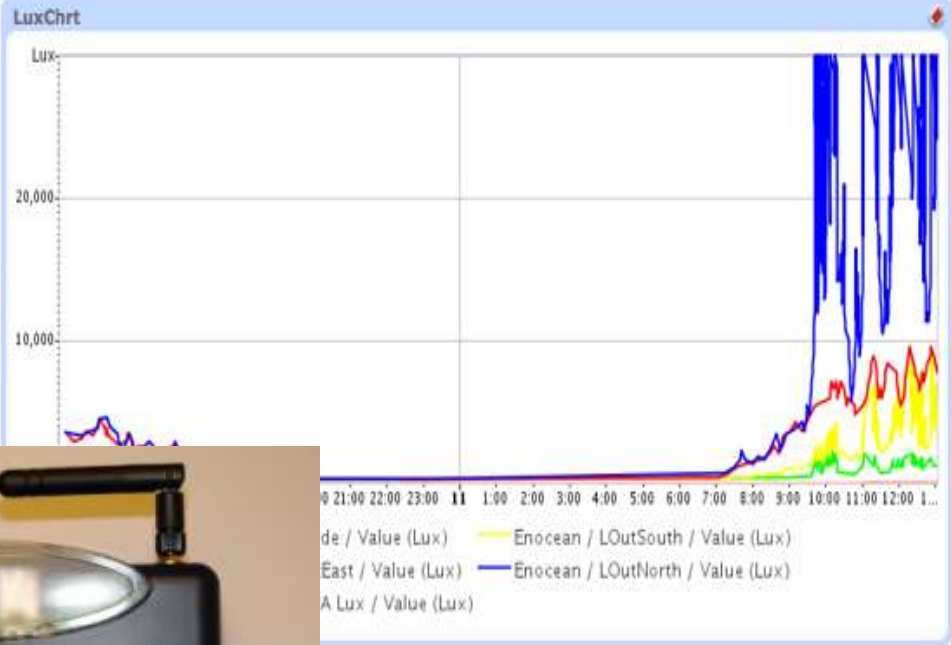
1 day

3/10/09 to 3/11/09

800 x 400

Interactive

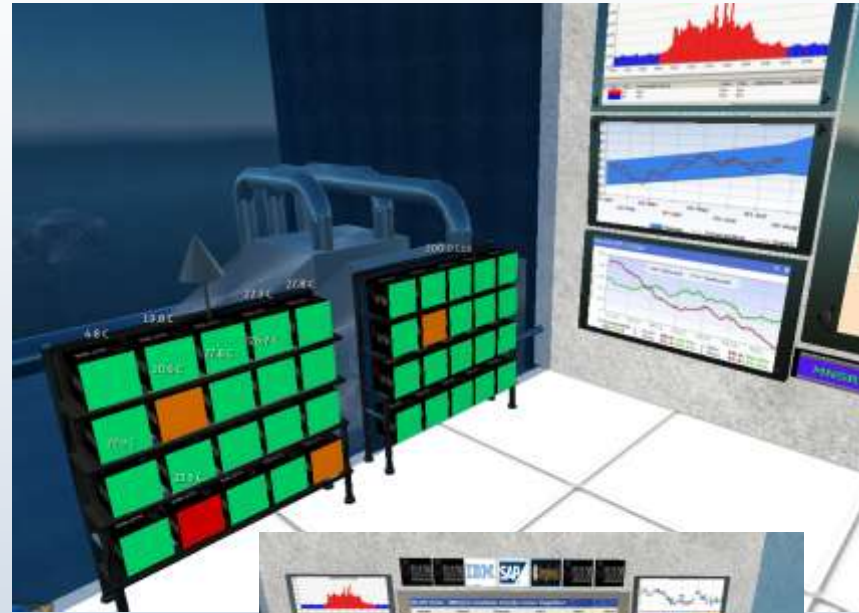
Update



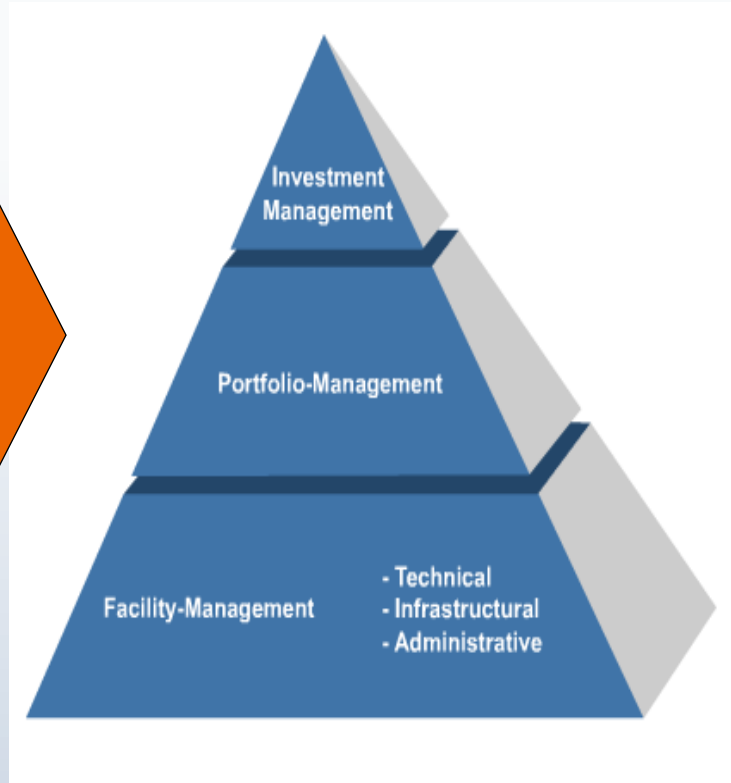
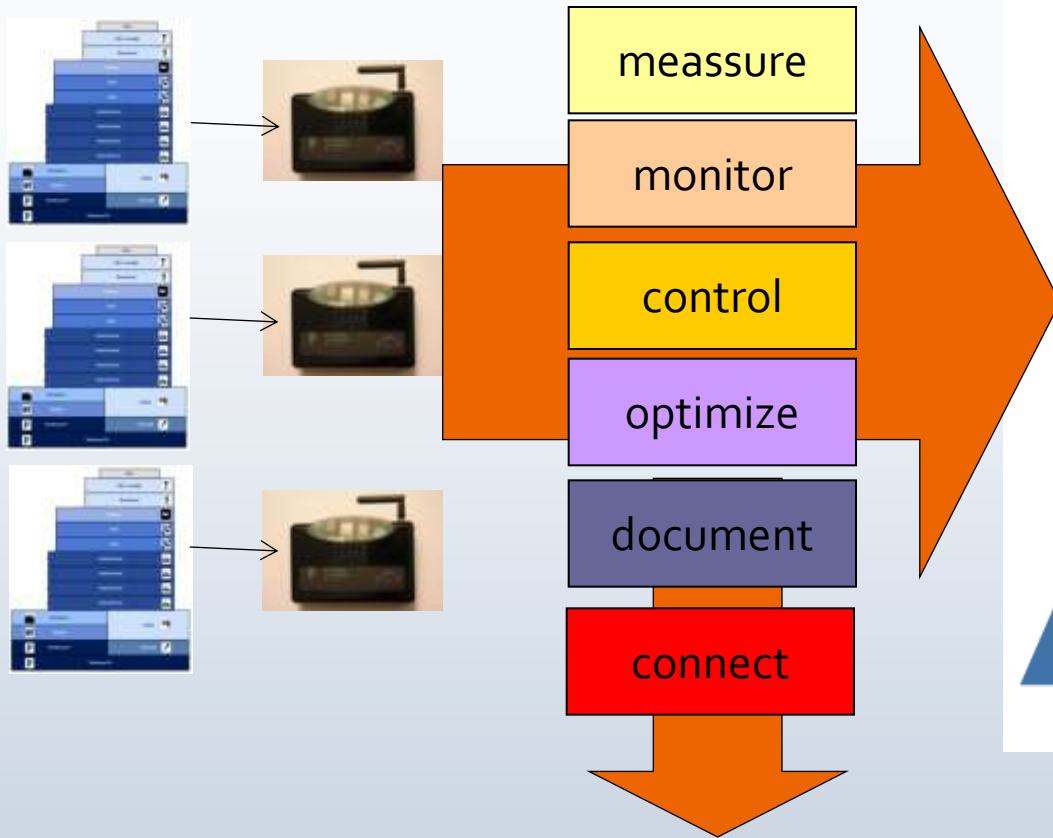
Shaspa Project - Virtual Operation / Call Centers



vs.



Shaspa[®] – Instrumenting the World



Asset Management

Energy Management

Virtual Worlds

Social Energy Meter

Benchmarking

Social Energy Meter

LinkedIn



When not connected



When connected

facebook

XING

twitter



www.shaspa.com